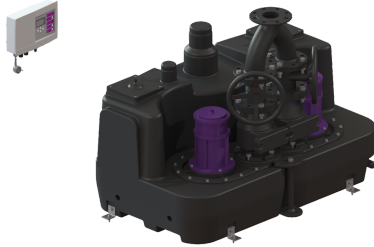


Lifting stati. Aqualift F XL 300l Duo, SPF 1400-S3, 2 shut-off valves



Article information

Item no.: 11017
 GTIN: 4026092056844
 Price group: 50

Advantages

- Different performance classes available
- Pressure sensor for reliable pneumatic level measurement
- Maximum operating reliability due to intelligent control unit (Duo)

Description

The lifting station for faecal and faecal-free wastewater is equipped with one or two submersible pumps and a backflow preventer. The collection tank made of permanently resistant polymer (PE) offers universal connection options and has a screwed access cover.

Variant

| | |
|---------------------------|-------------------------------------|
| Type of system: | duo pump |
| Shut-off valve: | 2 shut-off valves made of cast iron |
| Pressure pipe connection: | vertical |

General characteristics

| | |
|-------------------------|----------------------------|
| Colour: | black |
| Standard: | EN 12050-1 |
| Type of wastewater: | with sewage |
| Installation situation: | free-standing installation |
| System type: | Duo |

Dimensions

| | |
|----------------------|-----------|
| Net weight: | 208,87 kg |
| Gross weight: | 228,87 kg |
| Packaging dimension: | length |
| Packaging dimension: | width |
| Packaging dimension: | height |

Tank/drain body

| | |
|--------------|-------|
| Tank volume: | 300 l |
|--------------|-------|

Pumping device

| | |
|-------|----------|
| Pump: | SPF 1400 |
|-------|----------|

| | |
|---------------------------------|---------------------|
| Number of pumps: | 2 |
| Length of mains cable for pump: | 5 m |
| Operating mode: | S3 - 50 % |
| Impeller type: | Multi-vane impeller |
| Free passage: | 40 mm |
| Control | |
| Control unit: | Comfort |
| Level measurement instrument: | Immersion pipe |
| Type of level measurement: | pneumatic |
| Mains frequency: | 50 Hz |
| Operating voltage: | 230 V |