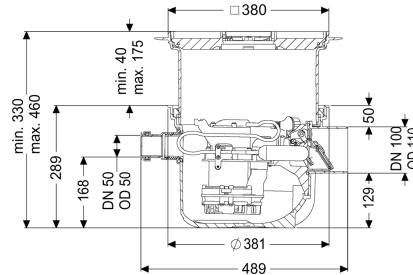
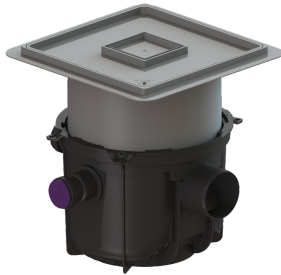


Pumpfix S backwater pump station DN 100, with tileable cover plate



Article information

Item no.: 280451X
 GTIN: 4026092085523
 Price group: 10

Advantages

- Drains reliably against backwater pressure
- Continuous running pump with multi-vane vortex impeller for maximum reliability
- System suitable for installation in waterproof concrete

Description

The backwater pumping station for faecal-free wastewater is equipped with one pump and two mechanical backwater valves which close automatically in the event of backwater.

Normally, draining takes place via the natural gradient to the sewer. During the backwater phase, draining takes place via the integrated pump against backwater pressure directly into the sewage channel.

- With vertically adjustable upper section for continuous height and level compensation and integrated floor drain
- System suitable for installation in waterproof concrete, groundwater resistant up to 3 m
- Backwater protection in accordance with EN 13564 type 5
- Including socket DN 50 for inlet and cable conduit
- Pump suitable for permanent operation with multi-vane impeller for maximum operational safety
- Including float switch for level measurement

Variant

Note on installation depth:	System suitable for installation in waterproof concrete
Discharge rate (l/s) with 20 mm backwater:	1,6
Mechanical backwater flaps:	2
System installation:	Waterproof concrete

General characteristics

Standard:	EN 13564
Nominal size (DN):	100
Outer diameter (OD):	110 mm
Type of wastewater:	without sewage
Delivery state:	plug-in ready
Backwater protection:	Type 5
ATEX:	no

Dimensions

Net weight:	10,8 kg
Gross weight:	12,1 kg
Groundwater resistant from lower edge of base section:	3000 mm
Cutout dimension, width:	600 mm
Cutout dimension, length:	600 mm
Installation depth:	330 - 460 mm
Length:	485 mm
Width:	380 mm
Packaging dimension:	length
Packaging dimension:	width
Packaging dimension:	height

Tank/drain body

Connection conduit pipe (DN):	50
Inlet nominal size (DN):	50 mm

Coverage features

Type of cover:	tileable cover plate
Cover material:	Polymer
Colour of cover:	selectable
Width of cover:	366 mm
Length of cover:	366 mm
Drainage function:	yes
Locking:	Lock & Lift
Load class:	K 3 (EN 1253-1)
Rim width:	380 mm
Rim length:	380 mm
Max. flooring height:	16 mm
Shape of upper section:	square

Pumping device

Pump:	GTF 500
Number of pumps:	1
Weight, pump:	6 kg
Connection type:	Schuko (earthed contact) 2-pin
Rated current:	2,7 A
Length of mains cable for pump:	5 m
Protection class:	I

Insulation class:	F
Cos phi - power factor:	0,91
Protection class (pump):	IP 68
Temperature monitoring:	integrated
Max. temperature (permanent) of conveyed material:	40 °C
Max. pumping height:	8 m
Speed:	2800 U/min
Power P1:	600 kW
Power P2:	360 kW
Operating mode:	S1
Type of fuse required (electrical protection):	C 16 A
Type of pump connection cable:	H07RN-F 3G 1.5 mm ²
Impeller type:	Multi-vane impeller
Control	
Mains frequency:	50 Hz
Operating voltage:	230 V
Connection type:	Schuko (earthed contact) 2-pin
Rated current:	2,7 A
Type of fuse required (electrical protection):	C 16 A