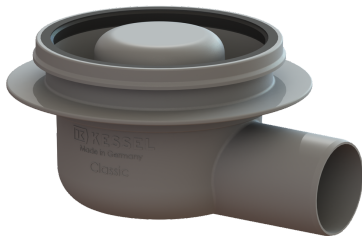


Drain body Classic bathr. drain Sys 100, DN 50, Horiz. outlet, OT 50 mm



Article information

Item no.: 40150
 GTIN: 4026092028650
 Price group: 10

Advantages

- Odour trap height: 50 mm
- Lip seal fixed to the drain body
- System 100 - Modular system

Description

The drain body for Classic floor/bathroom drains is made of polymer and is equipped with a secure, reliably installed seal.

Variant	
System:	100
Sealing water height:	50 mm
Discharge rate (l/s) with 20 mm backwater:	0,8
General characteristics	
Standard:	EN 1253-1
Nominal size (DN):	50
Outer diameter (OD):	50 mm
ATEX:	no
Odour trap:	included
Dimensions	
Net weight:	0,22 kg
Gross weight:	0,27 kg
Length:	184 mm
Width:	156 mm
Height:	90 mm
Packaging dimension:	length
Packaging dimension:	width
Packaging dimension:	height
Tank/drain body	
Number of outlets:	1
Material of drain body:	ABS
Socket version:	lateral