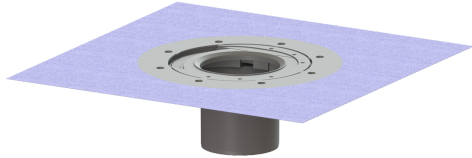


Intermediate section with system 100 glued flange



Article information

Item no.: 47900
 GTIN: 4026092034194
 Price group: 10

Description

KESSEL intermediate section with glued flange 120 mm
 System 100 made of ABS, for alternative waterproofing (seal composite) for natural stone coverings such as marble or granite, can be combined with all KESSEL upper sections System 100 (accessories), laterally adjustable to adapt to the tile grid, with construction period protection cover. Overall height:

Variant
 System: 100

General characteristics
 ATEX: no

Dimensions
 Net weight: 0,94 kg
 Gross weight: 1,18 kg
 Diameter: 312 mm
 Length: 312 mm
 Width: 312 mm
 Height: 120 mm
 Packaging dimension: length
 Packaging dimension: width
 Packaging dimension: height