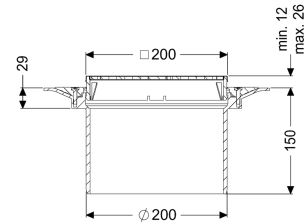
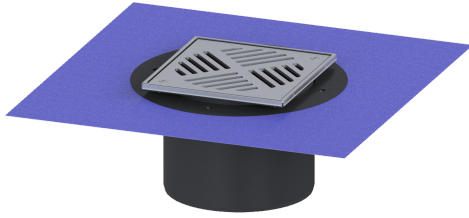


## Variofix upper section System 200, Slotted cover, 304 SST, L 15



### Article information

Item no.: 48978  
 GTIN: 4026092007990  
 Price group: 70

### Advantages

- Different covers selectable
- Including waterproofing membrane

### Description

Used in combination with a drain body of the KESSEL modular system, the upper section is suitable for indoor point drainage.

Variant

|  |   |
|--|---|
| System:  | 200   |
| Waterproofing layer on the upper section:                                | Enclosed sealing collar to be glued (bd) according to DIN 18534 |
| Water exposure class in accordance to DIN 18534-1 (up to and including): | W3-I  |

General characteristics

|       |    |
|-------|----|
| ATEX: | no |
|-------|----|

Dimensions

|                               |                                     |
|-------------------------------|-------------------------------------|
| Vertical adjustment:          | 12 - 25 mm                          |
| Net weight:                   | 2,22 kg                             |
| Gross weight:                 | 2,81 kg                             |
| Diameter:                     | 320 mm                              |
| Type of height adjustability: | vertically adjustable upper section |
| Height:                       | 150 mm                              |
| Packaging dimension:          | length                              |
| Packaging dimension:          | width                               |
| Packaging dimension:          | height                              |

Coverage features

|                         |  |
|-------------------------|--|
| Type of cover:          | Slotted cover  |
| Cover material:         | Stainless steel 14301                                |
| Colour of cover:        | silver   |
| Locking:                | screwed  |
| Load class:             | L 15 (EN 1253-1)                                     |
| Grating design:         | Kessel   |
| Slip resistance class:  | R11 according to DIN 51130; C according to DIN 51097 |
| Rim width:              | 200 mm   |
| Rim length:             | 200 mm   |
| Upper section:          | adjustable in three dimensions                       |
| Shape of upper section: | square   |
| Upper section material: | ABS  |