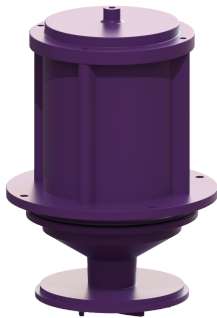


Pump drive SPF 3000 400 V, S1, 10 m cable



Article information

Item no.: 680532
 GTIN: 4026092074930
 Price group: 90

Description

Pump drive type SPF 3000-S1 for Aqualift F XL pumping station, dry installation

General characteristics

ATEX: no

Dimensions

Net weight: 27,5 kg
 Gross weight: 30,3 kg
 Packaging dimension: length
 Packaging dimension: width
 Packaging dimension: height

Pumping device

Pump: SPF 3000
 Connection type: Direct connection
 Operating voltage: 400 V
 Mains frequency: 50 Hz
 Rated current: 5,4 A
 Protection class: I
 Insulation class: F
 Cos phi - power factor: 0,89
 Protection class (pump): IP 68
 Max. temperature (permanent) of conveyed material: 40 °C
 Max. pumping height: 16 m
 Speed: 2845 U/min
 Power P1: 3,2 kW
 Power P2: 2,7 kW
 Operating mode: S1
 Type of fuse required (electrical protection): Fuse protection through control unit 400 V
 Type of pump connection cable: H07RN-F 7G 1.5 mm²

Control

Connection type:

Direct connection

Type of fuse required (electrical protection):

Fuse protection through control unit 400 V