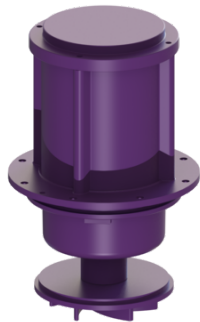


Pump drive SPF 5500 E 400 V, S3, 5 m cable



Article information

Item no.: 680727
GTIN: 4026092095508
Price group: 90

Description

Pump drive with multi-vane impeller for faecal wastewater

Dimensions

Net weight:	38 kg
Gross weight:	40 kg
Packaging dimension:	length
Packaging dimension:	width
Packaging dimension:	height

Pumping device

Pump:	SPF 5500 E
Connection type:	Direct connection
Rated current:	9,1 A
Length of mains cable for pump:	5 m
Protection class:	I
Protection class (pump):	IP 68 (3m/48h)
Max. temperature (permanent) of conveyed material:	40 °C
Max. pumping height:	27 m
Speed:	2840 U/min
Power P1:	5,6 kW
Power P2:	4,7 kW
Type of pump connection cable:	H07RN-F 7G 1.5 mm ²

Control

Mains frequency:	50 Hz
Operating voltage:	400 V
Connection type:	Direct connection
Rated current:	9,1 A