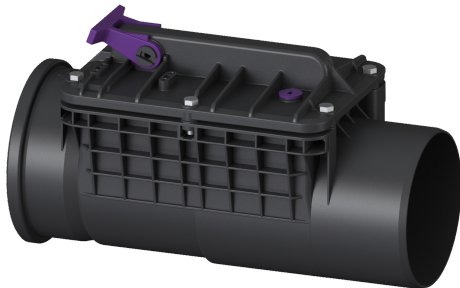


## Backwater valve Staufix Basic DN 200, Type 1, with emergency closure



### Article information

Item no.: 72200  
 GTIN: 4026092002384  
 Price group: 10

### Advantages

- Simple conversion possible using conversion kits
- Optional rat protection flap for additional safety
- Fast and toolless maintenance and cleaning

### Description

The backwater valve for wastewater without sewage is equipped with one mechanical flap which closes automatically in the event of backwater and also serves as an emergency closure to be closed by hand. Thanks to the modular KESSEL system, existing systems can easily be supplemented by a second backwater flap.

#### Variant

Stainless steel flap as rat protection:	no
Emergency closure:	yes
Mechanical backwater flaps:	1

#### General characteristics

Colour:	black
Standard:	EN 13564
Nominal size (DN):	200
Outer diameter (OD):	200 mm
Type of wastewater:	without sewage
Installation situation:	exposed drainage pipe
Delivery state:	installation-ready
Backwater protection:	Type 1

#### Dimensions

Net weight:	2,6 kg
Gross weight:	2,6 kg
Vertical drop between inlet and outlet:	9 mm
Length:	530 mm
Width:	248 mm
Height:	328 mm
Packaging dimension:	length

Packaging dimension:

width

Packaging dimension:

height

Coverage features

Cover locking:

screwed