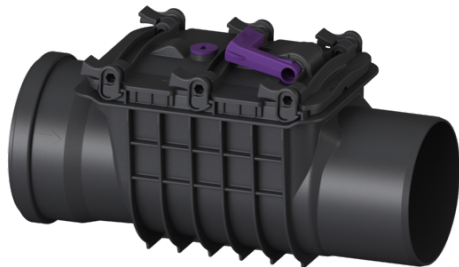


Backwater valve Staufix Basic DN 150, Type 2 R, with emergency closure



Article information

Item no.: 73150R
 GTIN: 4026092028353
 Price group: 10

Advantages

- Optional rat protection flap for additional safety
- Fast and toolless maintenance and cleaning
- Ideal for modernisation, can also be installed in existing pipes later

Description

The backwater valve for wastewater without sewage is equipped with two mechanical flaps which close automatically in the event of backwater. One flap serves at the same time as an emergency closure to be closed by hand.

Variant

| | |
|---|-----|
| Stainless steel flap as rat protection: | yes |
| Emergency closure: | yes |
| Mechanical backwater flaps: | 2 |

General characteristics

| | |
|-------------------------|-----------------------|
| Colour: | black |
| Standard: | EN 13564 |
| Nominal size (DN): | 150 |
| Outer diameter (OD): | 160 mm |
| Type of wastewater: | without sewage |
| Installation situation: | exposed drainage pipe |
| Delivery state: | installation-ready |
| Backwater protection: | Type 2 |

Dimensions

| | |
|---|--------|
| Net weight: | 2,8 kg |
| Gross weight: | 2,8 kg |
| Vertical drop between inlet and outlet: | 9 mm |
| Length: | 450 mm |
| Width: | 200 mm |
| Height: | 280 mm |
| Packaging dimension: | length |
| Packaging dimension: | width |
| Packaging dimension: | height |

Coverage features
Cover locking:

Quick-release closure